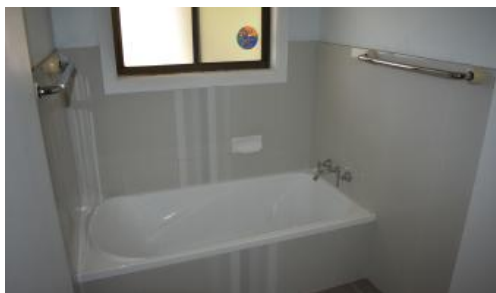


Sold

Kyogle REAL ESTATE

1088 Summerland Way, Kyogle



## TICKS ALL THE BOXES

Located 10 minutes from Kyogle's CBD sits this well maintained 4 bedroom brick home on 3 level acres. With the 3 acres already divided into 3 stock proof paddocks, all the hard work has been done! Inside features 4 bedrooms all with built-in robes, a large formal dining room, massive lounge room, solid timber kitchen- only installed approx. 8 years ago, the bathroom has been modernised and well thought-out having an entry from the main bedroom, separate toilet and large bath plus a spacious shower and an indoor laundry with a second shower. The temperature inside won't be a problem with a fireplace and reverse cycle air-conditioner to keep you warm or cool all year round! Keep your electricity costs down with solar hot water and natural light through the sky lights in the kitchen and bathroom. Verandas surround the entire home ensuring you have plenty of space to relax and unwind. Outside we have a second toilet, an extra-large covered entertainment area that you will not turn down the opportunity to host BBQs and celebrations, plenty of room for cars, caravan, tractor and boat or to keep up with your hobbies with a large double garage both with electric roller doors and workshop, shed plus a large carport. Water is not a problem with 4 large tanks and a bore in place, especially to keep the picturesque gardens and fruit trees on point throughout the year.

🛏 4 🚿 1 🚗 3 📏 1.22 ha

**Price** SOLD for \$465,000

**Property Type** Residential

**Property ID** 804

**Land Area** 1.22 ha

### Agent Details

Simon Tough - 0402 706 565

### Office Details

Kyogle

90 Summerland Way Kyogle NSW

2474 Australia

02 6632 1077



Kyogle REAL ESTATE

*The above information provided has been furnished to us by the vendor/s. We have not verified whether or not that information is accurate and do not have any belief in one way or the other in its accuracy. We do not accept any responsibility to any person for its accuracy and do no more than pass it on. All interested parties should make and rely upon their own inquiries in order to determine whether or not this information is in fact accurate.*